



NEW 2025 520 VELOCITY

SPECIFICATIONS

Overall Lengths (LOA)*	15.75 m / 51.67 ft
Hull	Dual Hull Cat.
Beam	5.35 m / 17.55 ft
Draft	0.75 m / 2.46 ft
Fuel Capacity	3,000 l / 792 gal
Fresh Water Capacity	1,200 l / 317 gal
Option: Inbd. Diesel Engs. - Surface Drive	2 x 550 HP
Option Outboard Engines - Quads	4 x 325-600HP
Top Speed	28-60 kts
Cruising Speed	18 kts
Cabins	2-4
Construction	Epoxy Infused Fiberglass
European Certification*	C

KEY FEATURES

- Epoxy-infused dual-stepped hull for superior strength and speed
- Catamaran hull delivers stability, efficiency, and smooth handling offshore.
- Flybridge, two large sun decks, and open areas designed for entertaining.
- The world's first lightweight, full-size multi-cabin performance catamaran.
- Twin outboard setup – for high performance
- Spacious layout with 4 cabins, 2 bathrooms, kitchen, and dual living areas.
- Fully equipped cabins with double berth, head, fridge & TV

STANDARD EQUIPMENT

COCKPIT & COMFORT

- Raised Rear Swim Platform Rails & Lockable Rear
- Self draining Deck
- Rear Deck Shower
- Transom Gate
- Swim platform with grab Rails
- Synthetic Teak Decks
- Stainless Steel Hinges
- Raw and Freshwater Washdowns
- Thru Hulls - Stainless Steel
- Boarding Ladder
- Bow Anchor Storage
- Stern Bench Seat w/ Full Upholstery
- (5G) Bucket Storage (2) Port & Starboard with Hatches
- Tinted Sliding Glass Windows, Single piece Glass
- Curtesy LED Lighting
- Bow Eye, Bow Roller, Cross Bollard
- Bow rail – Matt black Aluminium
- Gate
- Deck mounted Fuel Fillers – S/Steel
- Moulded Anchor Locker
- Deck Hatch
- Regulation LED Navigation Lights



CONSOLE & FLYBRIDGE HELM

- Helm Seat Aluminum Powder Coated Upholstered Seating
- Battery Selector
- Fire Extinguisher
- Marine Horn - Electric
- Compass - Richie Voyager
- Premium hydraulic steering system

HELM STATION

- Gauges Full Panel
- 2 x 12" GARMIN Display
- Dual binnacle controls
- Compass
- Switch panel
- VHF marine radio & aerial
- Full engine instrumentation including fuel gauges



SEPARATE BATHROOMS

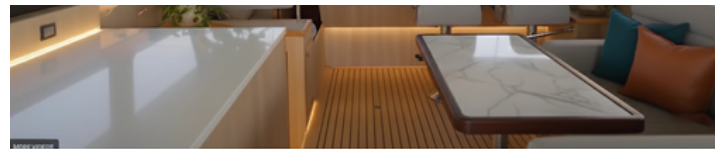
- 2 Heads
- Fresh Water Toilets
- Shower
- Sink
- LED Lighting
- Veneer Flooring
- Mirror

ELECTRONICS & LIGHTING

- 2 x 12" GARMIN Display
- Autopilot
- Sound System
- Battery Charger - 2 Bank
- Rocker Switch Panel, Backlit w/ 12v and USB Charging Ports
- Dual engine Batteries 120AMP
- 120AMP Circuit Breaker for Anchor Winch
- Mounted Anchor Light
- 4 x High Capacity Bilge Pumps
- Electric Winch - 2000W
- 1 X 15 KW GENERATOR
- Pressurized Fresh Water System inc. Toilets

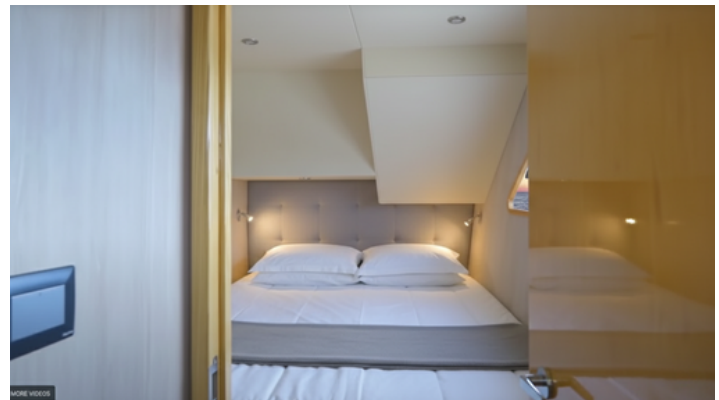
SALOON AREA

- Ceiling and Courtesy LED's
- 2 x 12" GARMIN Display
- Work Station
- Dining Table
- Sofa



CABINS

- 3-4 Cabins with full Head Room
- Forward Storage Lockers x 2
- Clothes Hanging Locker
- LED Lighting
- Veneer Flooring
- Large Double Bed



GALLEY

- Fridge/Microwave Oven/4 Burner Electric Stove
- Sink
- Galley Top

PROPULSION OPTIONS

- 4 x Outboard 325-600 HP
- 2 x 550 HP Diesel Surface Drive



ELECTRONICS & LIGHTING

- 2 x 12" GARMIN Display
- Autopilot
- Sound System
- Battery Charger - 2 Bank
- Rocker Switch Panel, Backlit w/ 12v and USB Charging Ports
- Mounted Anchor Light
- 4 x High Capacity Bilge Pumps
- Electric Winch - 2000W
- 1 X 15 KW GENERATOR
- Pressurized Fresh Water System inc. Toilets

SALOON AREA

- Ceiling and Courtesy LED's
- 2 x 12" GARMIN Display
- Work Station
- Dining Table
- Sofa

OTHER STANDARD EQUIPMENT

- 3000L Fuel Tanks under Floor Deck
- 600L Water Tank – With fully Automatic Pressure system



For a detailed quote and options, contact [us today.](mailto:info@seasearchermarine.com)

Tel: + 66 85 287 2957

Email: info@seasearchermarine.com

Web: seasearchermarine.com

